

Concealed single-lever mixer with diverter - Brushed Bronze

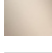
TARA

36 120 660



- automatic diverter
- cover plate Ø 150 mm

Fits: TARA, META

	Brushed Bronze	36 120 660-42
	Chrome	36 120 660-00
	Brushed Platinum	36 120 660-06
	Platinum	36 120 660-08
	Dark Chrome	36 120 660-19
	Light Gold	36 120 660-26
	Brushed Light Gold	36 120 660-27
	Brushed Durabross (23kt Gold)	36 120 660-28
	Matte Black	36 120 660-33
	Brushed Champagne (22kt Gold)	36 120 660-46
	Champagne (22kt Gold)	36 120 660-47
	Brushed Chrome	36 120 660-93
	Brushed Dark Platinum	36 120 660-99

Required miscellaneous



Concealed single-lever mixer with backflow preventor - 35 021 970 90
 •min. recess depth 80 mm
 •max. recess depth 105 mm

Recommended miscellaneous



xGRID Attachment set for integrating in the dry wall construction - 12 340 970 90

Required miscellaneous



Concealed single-lever mixer - 35 020 970 90
 •min. recess depth 80 mm
 •max. recess depth 105 mm

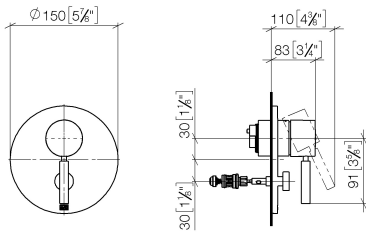
Required miscellaneous



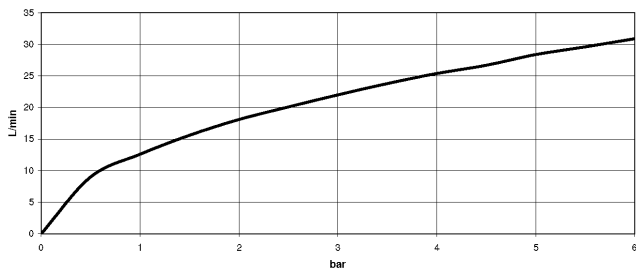
xGRID Installation track 555 mm - 12 360 970 90

36 120 660

mm [inches]



Flow rate chart



Certificates

LGA_19863.

WRAS_2207012.

36 120 660

